

Magen David – KHYAL by Theresa Poulton

In this issue:

North East Museum News from Director, Keith Merrin

News from The Shipley Art Gallery

Newcastle Fine Art Students "in a pinch" at the Late Shows

AGM 2025 reconvened

Featured artist – Theresa Poulton

Drawing Workshop by Theresa Poulton

Reviews of some of our recent workshops

"What's On" at The Hatton and locally

Friends of the Hatton

Summer Bulletin 2025

President: Baroness Joyce Quin

www.friendsofthehatton.org.uk

The Friends of the Hatton is a registered charity No. 1089739

Hatton Friends

This bulletin contains contributions by:

David Butler, Susan Chaplin, Josephine Cousin, Bill Jackson, Vivien Jackson, Hannah Mackay-Jackson, Keith Merrin, Roger Newbrook, Theresa Poulton, Judith Ramsay and Richard Thompson.

If you would like to write an article for us for use in a future bulletin; maybe a review of a workshop, talk or an exhibition you have seen, please contact us, by emailing [**hatton.friends@btinternet.com**](mailto:hatton.friends@btinternet.com).

Dear Friends

We are now experiencing a period of lovely sunshine at the moment, albeit we also need some rain to water the earth. The sunshine and warmth help raise our spirits.

We held our annual Exhibition in early April which was a great success. Thank you to everyone who spent time producing such great work.

On the Saturday, in the middle of the Exhibition period, we held our Annual General Meeting. This was also well attended but we were unable to fill the post of Chair, Secretary and Treasure. These posts are crucial in order for the charity to continue. We have through our bulletin been advertising this over the last 12 months. Therefore, we are intending to reconvene the Annual General Meeting on Saturday 16th August in hope we can then find volunteers to fill the Officers posts.

Please put this date in your diaries and try to attend.

Bill Jackson

Acting Chair of Friends of the Hatton

Notice: re-convened Annual General Meeting

To all Members of Friends of the Hatton.

The Friends of the Hatton Annual General Meeting, which was adjourned on 4th May 2025, will be re-convened on Saturday 16th August 2025 commencing 10.30 in the Learning Room of the Hatton Gallery.

A follow up agenda and other relevant documents will be posted out to all members during week commencing Monday, 28th July 2025.

Richard Thompson

Acting Secretary

North East Museums news

I was delighted to recently attend the AGM of the Friends of the Hatton and have the opportunity to speak about the work of North East Museums. We manage 12 museums, galleries and heritage sites in the region which includes the Hatton Gallery which, along with Great North Museum:Hancock, we look after on behalf of Newcastle University.

I was particularly pleased to showcase the fact that we have recently taken on looking after three museums in Northumberland on behalf of the County Council. These are Hexham Old Gaol, Morpeth Chantry Bagpipe Museum and Woodhorn Museum. The largest of these is Woodhorn near Ashington and I am certain that it will be of particular interest to members of the Friends of the Hatton as it is home to the permanent collection of the Ashington Group of Pitmen Painters.

The Group started in 1934 when a number of men, mainly miners, in the town began a course in art appreciation run by the WEA (Workers Educational Association) under the guidance of Robert Lyon a tutor from a forerunner of Newcastle University's Art Department. The men had previously studied evolution and wanted to do something different. Robert Lyon soon realised their lack of knowledge regarding art did not stop their enthusiasm for the subject, which soon led to them experimenting in the different techniques themselves.

In 1936 The Ashington Group held its very first exhibition in the Hatton Gallery creating a direct link between the two museums. Over the next 50 years the Ashington Group met weekly, continuing to experiment with techniques and materials. The story of the Ashington Group would later inspire Lee Hall's famous play 'The Pitmen Painters'.

If you haven't visited I would encourage you to do so and also see a new gallery, The Coal Town Collection, dedicated to the work of social documentary photographer Mik Critchlow (1955–2023) which opens on the 24th of May.

Mik documented his hometown and community of Ashington over a 45-year period after seeing an exhibition by the Ashington Group in 1977. As Mik said: "They recorded their lives with such



honesty, painting the ordinary, the mundane, the everyday and put it all down on paper or canvas or hardboard. They showed me that ordinary people's lives could be important and could be seen as art." Mik's work captures the end of the coal mining industry in Ashington and the immediate and longer-term impacts of the loss of the industry on the town's people, places, and community and is a stunning collection.

More information on visiting Woodhorn and all of our other museums can be found at <https://www.northeastmuseums.org.uk/>

Keith Merrin

Director, North East Museums (formerly Tyne & Wear Archives & Museums)

www.northeastmuseums.org.uk

The Shipley Art Gallery

The Shipley Art Gallery in Gateshead has a vibrant programme of creative activities for all ages.

Here you'll find classes spanning a range of artforms, including drawing, painting, fused glass, ceramics, floristry and embroidery. Most classes are one-offs, enabling you to make a complete artwork in one session, under the guidance of friendly tutors.

There is also a calendar of events to celebrate the seasons. Here you can make beautiful seasonal decor for your home, or to gift to loved ones.

Craft markets take place in spring, summer and winter, offering the opportunity to meet local makers and buy enticing handmade items at affordable prices.

A range of self-led groups also meet at the Shipley, to develop their creative skills together. These include quilting, drawing and painting, crafting and lace making.

The programme also includes events and activities for families and schools. Crafty Kids is a weekly session especially designed for under 5s to explore the exhibitions. In school holidays, Family Crafting and Family Art Class offer creative opportunities for children and adults to enjoy together. Creative lego coding - where children design and build their own moving robots - is always popular!

As well as an array of activities, the Shipley offers a range of high quality exhibitions. The Shipley is the North East's leading gallery of craft and design. Its five gallery spaces house a distinct and varied collection: highlights include Tintoretto's Christ Washing the Disciples' Feet which spans the back wall, creating a wow moment as you step inside. There is also a specialist ceramics gallery; a gallery depicting the history of nearby Saltwell Park and the Shipley's early collections; and two galleries showcasing North East makers and designers.

For details of everything that's happening at the Shipley, visit www.shipleyartgallery.org.uk or telephone 0191 477 1495.

Free entry - donations welcome. Open Tues - Fri 10am - 4pm and Sat 10am - 5pm. Closed Sundays and Mondays. Free on street parking. Step-free entrance. See www.shipleyartgallery.org.uk for further details.

Shipley Art Gallery, Prince Consort Road, Gateshead, NE8 4JB.

Hannah Mackay-Jackson

Project Coordinator (part time), Shipley Art Gallery

In A Pinch: Newcastle University Fine Art students at the Late Shows

On Friday 16 May all of the first year Fine Art students at Newcastle University exhibited as part of [The Late Shows](https://thelateshows.org.uk/) (<https://thelateshows.org.uk/>). This major public exhibition is a regular annual collaboration with [The NewBridge Project](https://thenewbridgeproject.com/events/in-a-pinch-late-shows-2025/) (<https://thenewbridgeproject.com/events/in-a-pinch-late-shows-2025/>). But this year the exhibition *In A Pinch* saw the first years collaborating with artists from [The Collective Studio](#) at NewBridge. The Collective is a partnership between Newcastle University and The NewBridge Project providing resources and professional development for recently graduated artists across all disciplines.



Image courtesy Tegwen Owen-Stanford

In A Pinch gave first year Fine Art students a great opportunity to work with established artists showing a range of 2D, 3D and audio/visual artworks in a collectively built installation. This support structure borrows ideas from NewBridge's recent '[Open'Open](#)' exhibition. The collaboration also makes a really creative input to The Collective Studio's artist development programme. So benefit all round!



Image courtesy Katarina Jimack

In A Pinch celebrated the students reaching the end of the first year of their degree and gave you the opportunity to see the range of work they have made this year – and to get a little taste of their degree show in 2028. So if you didn't catch them this year at *In A Pinch* put a date in your diary for 2028 for their degree show and see what has happened with their work over four years!

And don't forget that you can see this year's Degree Show in the Fine Art Department from 24 May to 6 June. The preview is on Friday 23 May 6-9pm and you are all invited!

'In A Pinch', 16 May (6.30-10.30pm) and Sat 17 May (12-5pm).

The NewBridge Project is at, 4-8 Clarence Walk, Stoddart St, Newcastle NE2 1AL

David Butler

Senior Lecturer in Fine Art and LifeWorkArt Coordinator

Friends spring exhibition 2025

Our late spring exhibition which was organised and administered by Marion Thompson was held in The Ex Libris Gallery. It featured 41 works by 20 artists. Thanks to: Jill Arthey, Nick Banks, Gillie Cawthorne, Jo Cousin, Sheila Culling, Suzi Firenzi, Shaun Flett, Richard Hall, Leila Hogarth, Stephen Hurrell, K Hurst, Deborah C Leigh, Karen Melvin, Geraldine Morris-Dowling, Roger Newbrook, Eric Nicholson, Brenda Proctor, Judith Ramsay, David Renwick and Bob Young.



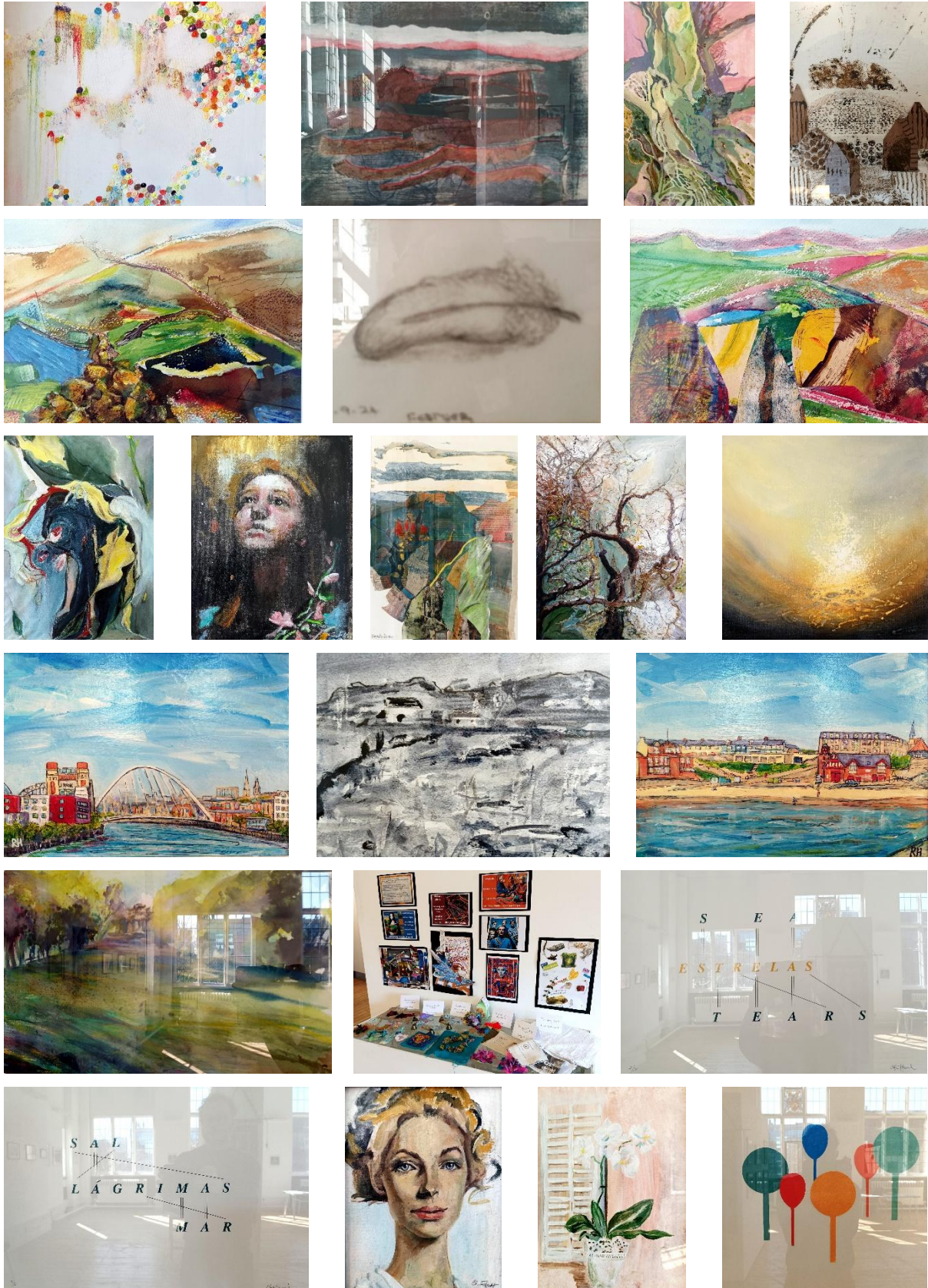
The works were created using a variety of media and techniques including acrylic, collage, collagraph, digital collage, embroidery, gouache, mixed media, monoprint, oil, pastel, pencil, photography, screenprint, wall hanging and watercolour.

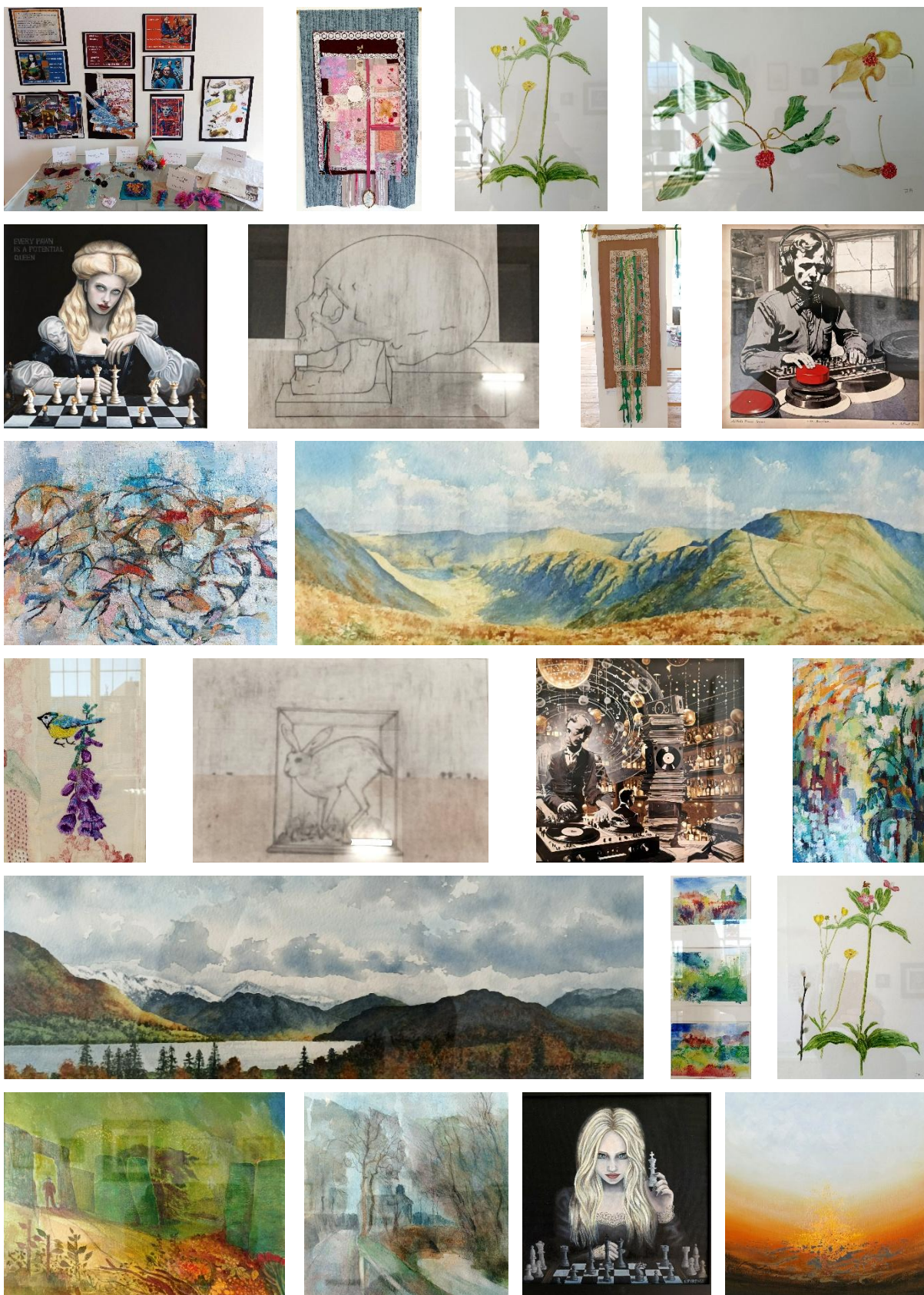


We also featured some of the work produced during some of our workshops including Leila Hogarth's AI and the Artist workshop, Jean Tinsley's Hanging Bird Decoration workshop, Kath Price's Seasonal Fun with Fabrics and Traditional Clippy and Hooky Matmaking workshops, Louise Underwood's Memory Book workshop and Jo Duncan's Woolly Creatures workshop.



Apologies for any reflections on the photographs of the works on the following pages. The exhibition coincided with a spell of unbelievably good spring weather!





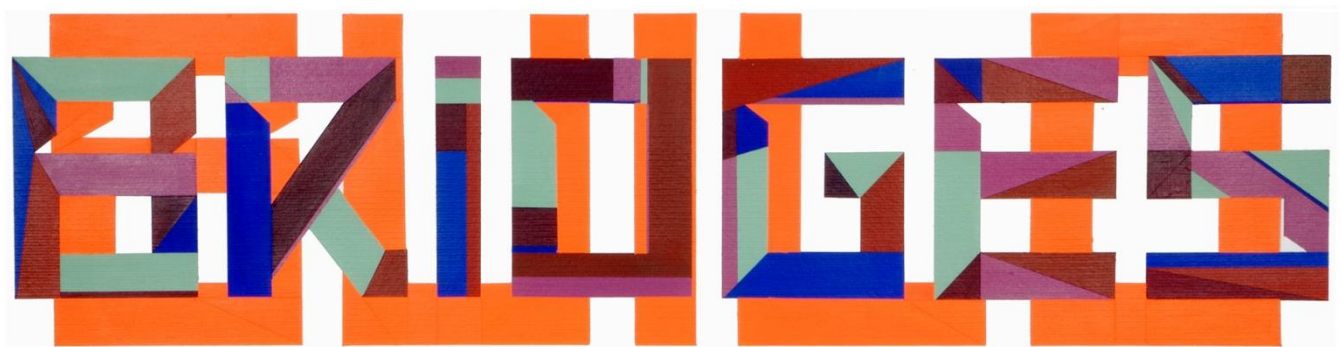
Featured Artist – Theresa Poulton

Theresa Poulton was born in Everton, United Kingdom, 1963, she lives and works in the North East of England. Theresa is a Newcastle University MFA graduate, a freelance art tutor, hard-edged, abstract, geometric and text-based artist with a range of skills and knowledge in painting, drawing, composition, colour relationships, collage and theory.



Two Steps Forward and One Step Back (Memento Mori)

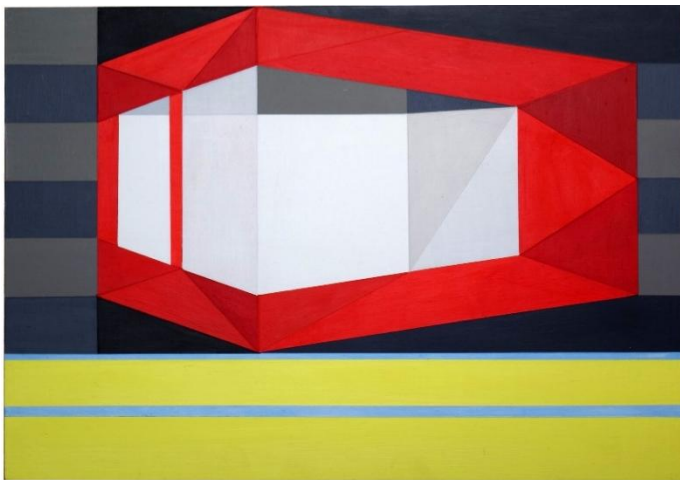
She is a productive and highly motivated individual, with a wide range of abilities; including strong communication, team working and organisational skills. Working with galleries, academic institutions and various community participatory groups, She regularly devise and deliver creative and educational workshops.



Build Bridges

Theresa is an active member of AUE – Artist Union England and an anti-racist activist and educator.

Her academic studies began in 2007, with an *Access to Art and Design* course, at Stockton Riverside College. She continued her Fine Art education at University of Sunderland and was awarded a First Class, Fine Art BA (Hons) in 2011.



Memento Mori, acrylic on gesso panel



Israel/Palestine - Wrap Around

Theresa gained her MFA at Newcastle University, in 2013.

Theresa is a hard-edged Geometric painter, her creations are hybrid, a fusion of text and abstraction. Her typographical words and statements are politically loaded; in general they are informed by lived experiences and personal research projects.

As a freelance artist Theresa has taught workshops in Galleries and Academic Institutions in the region. She has taught a wide range of visual art subjects and works together with participants from a diversity of backgrounds, levels of art education and achievement.

Over three years ago Theresa joined forces with fellow activists to form an Anti-Racism in Education group.

Theresa's painting are held in the following collections:

Fine Art Department - University of Sunderland, Newcastle University Business School, Durham University and Durham Sixth Form Centre.

Website:

<http://www.theresapoultonartist.com/>

Instagram: <https://www.instagram.com>



Quadriptych Reverse Angle 4

Upcoming Workshop

Our workshops are £20 for members, £25 for non-members. **Workshops and events are held in the Learning Room at the gallery** unless stated otherwise.

Drawing Form - Figurative and Still Life Workshop with Theresa Poulton

Saturday 21 June, 11am - 3pm. £20 for Friends, £25 for non-members



'The Three Graces' – Raphael, Oil on Panel
Dulwich Picture Gallery, all rights reserved

Drawing Form: using pencil and charcoal, or materials of your choice, you will be taught basic two and three dimensional drawing techniques e.g. gradation and tonal exercises, to learn how to replicate and explore the image of the Three Graces by Raphael (left) with our Feature Artist Theresa Poulton.

This is a dry workshop (no paint). Theresa will provide all reference images.

A4 and A3 cartridge paper will be provided. Participants can bring their own paper or sketch books if they wish.

Pencils (graphite) and coloured pencils will be provided

If participants want to bring their own pastel paper and pastels that's fine

Reviews of some of our recent workshops...

Slow Stitching for Spring with Jo Duncan

Jo brought an impressive selection of materials and examples to the slow stitching workshop in April. Her enthusiasm for her craft was infectious. The session was perfectly pitched to accommodate beginners, who benefited from Jo's demonstrations and advice, while giving scope to those with more experience with needle and embroidery thread. It was my first experience of a 'Friends of the Hatton Gallery' workshop, and I look forward to the next.'

Susan Chaplin

Jo Duncan led a workshop on Saturday morning the 12th April on "Slow stitching" Her theme was spring. We all stitched a small hoop of flowers in a limited range of embroidery stitches suitable for all abilities. Jo had also prepared for every participant a small Easter draw string bag, suitable for a small gift. Everyone was in a different pretty fabric, with an Easter Bunny on the front, with instructions on how to finish them at home.



As the workshop progressed the group of participants interacted very well with each other, sharing ideas and resources. There was plenty of laughter throughout the session and I am sure everyone left in a relaxed frame of mind.

Vivien Jackson

Block printing on fabric workshop with Jean Tinsley



I joined a group of happy ladies in March, to learn about Block Printing on fabric, from artist Jean Tinsley. Jean demonstrated the use of printing blocks and paint, and showed examples of possible designs. We then practiced using the printing blocks on a spare piece of calico, before designing our own tote bags. I enjoyed trying out different patterns and colours, and seeing the wonderful designs by the other ladies at the workshop. A very enjoyable workshop, so glad I went".

Judith Ramsay

What's on at the Hatton Gallery

Hatton Gallery Opening Times: Monday to Saturday, 10am to 5pm

Invisible Soup

Friday 27 June - Saturday 26 July

A fresh interpretation of 21st-century painting. Artists challenge how painting can transcend the traditional flat canvas and easel, integrating various materials and techniques that blur the boundaries between painting and other art forms. Participants: Erika Servin, Nick Fox, Chris Jones, Paul Merrick, Narbi Price, Jane Millican, Tracey Tofield, Katie Cuddon, Catrin Huber, Matt Antoniak, Rachel Maclean, Christian Mieves.

Kurt Schwitters' Merz Barn Wall



Schwitters' Merz Barn Wall is now presented alongside new interpretation.

On permanent display - Free

What's on locally

Some other highlights from galleries across the region...

Alnmouth Arts Festival 20th Anniversary.

14th and 15th June. Various venues and artists.
<https://alnmouthartsfestival.org.uk/>

Bailiffgate Museum

Alnwick, Northumberland.
Sun Tue-Sat 10 to 4 pm

David Wilson - Until 13 July 2025

David's exhibition explores two very different landscapes- the North West Highlands of Scotland and Northumberland.

Baltic Centre for Contemporary Art

Shore Road, Gateshead Quays

Ali Cherri - How I Am Monument

Ali Cherri presents a major body of new work inspired by archaeological artefacts and the natural world.

Laura Lancaster and Rachel Lancaster -

Remember, Somewhere until 12 October

Identical twins and prolific painters, the Lancasters have carved out distinct painting

styles and have exhibited nationally and internationally.

The Biscuit Factory

16 Stoddard Street NE1 1AN
10 till 5 pm each day. FREE

Jim Moir: Knot Twister Prologue until 20 July

Jim Moir (AKA Vic Reeves) returns to The Biscuit Factory with a brand new collection of original paintings. From charming watercolours to expressive & bold oil paintings; his passion for nature is obvious in every composition, as are the unique characters of his subjects.

The Bowes Museum

Barnard Castle, County Durham Sun-Sat 10-5
17.50 under 18's free.

From Joséphine Bowes, Trendsetters and

Trailblazers - Until 29 June. A landmark exhibition honouring the pioneering spirit and 200th anniversary of museum co-founder.

Bureau of Dreams

St. Mary's Chare, Hexham, NE 46 1NQ
Open Thurs to Sat 10-4pm.

Rachel Hope paints primarily in oils sometimes acrylics and produces hand cut collages. She is influenced by Surrealism and inspired by a sense of magic.

Castle Fine Arts

61-67 Grey Street, Newcastle upon Tyne
Open Mon to Sat 10-6pm Sun 11-5pm.

Featured artists in the Gallery include:

Bob Dylan, Johnny Depp and Boy George.

Dead Dog Gallery

*Durham Sixth Form Centre, Providence Row,
The Sands, Durham, DH1 1SG*

Maria Cooper - Colour, Print and Motion

Maria Cooper is a printed textile artist and designer based in County Durham. Through stencil screen printing, Cooper translates her original drawings and paintings into dynamic textile compositions.

Jim Edwards Studio

57 Lime Street, Newcastle upon Tyne, NE1 2PQ
Tues-Fri 10 till 4 pm. Saturday by appointment.

The Find. Vintage and Artisan Goods

59 Lime Street. Ouseburn Valley
Open Wednesday - Sunday 10 to 5 pm

Gallagher and Turner

30 St. Mary's Place, NE1 7PQ.

Encounters with the Coast - Preview Thursday
29th June 5 to 7.30 pm

30th June to 12th August. Artists include Ruth Bond, Andrew Cheetham, Melvyn Evans, Cristian Heath and others.

Great North Museum Hancock

Barras Bridge, Newcastle upon Tyne.
Mon-Fri 10 to 5, Sat 10 till 4, Sun 11 till 4

The Hancock Gallery

*2 Jesmond Road West, Newcastle upon Tyne,
NE2 4PQ.* Open Tues - Sat 10-5pm

Hanji 16

St. Mary's Chare, Hexham, NE461NQ.

Origami Maps, Bookbinding kits, Original art. Yvetteja.com, hello@yvetteja.com

The Hut on the Green

Gosforth Central Park. Church Road, Rothwell Road, Gosforth, Newcastle upon Tyne, NE3 1TX

The Hut on the Green is a place where people from all walks of life can come together to explore, learn and create. They offer classes and courses in Life Drawing, painting, ceramics, basket weaving and a children's art club. Email: nick@mushroomworks.com for further information or call 0191 224 4011.

Mining Art Gallery

Bishop Auckland, County Durham. Sun Wed-Sat
11 am to 4 pm.

Ted Holloway: A Bevin Boy Remembered

until 8 June 2025. The exhibition presents a selection of Ted's paintings and drawings spanning the course of his life from miner to art teacher and professional artist.

Laing Art Gallery

New Bridge Street, Newcastle upon Tyne.

With these Hands

until 27 September
This exhibition explores the representation of craft in paintings, drawings, and prints in Britain and Europe from the 1750s onwards.

Chris Killip - The last ships

Permanent exhibition documenting the rise and fall of ship building in the North East of England in the 1970's.

Lindisfarne Castle

Holy Island

Liz Gre - throughout 2024 and into 2025. In conjunction with the National Trust, this exhibition uses light, sound and cultural

elements to draw inspiration from the elemental nature of Holy Island.

Lollamac

St. Mary's Chare, Hexham, Northumberland.
Traditional metalworking tools and techniques form transform unassuming pieces of metal into wearable art.

Links Art Gallery

Dukes Walk, Whitley Bay, NE26 1TP
Open each day 9-5pm. The Gallery stocks a wide range of art and craft with the emphasis on work by North East Artists.

Newcastle's Independent Handmade Market

Grainger Market 9 to 5 pm
First Saturday of the month. Unique local handmade art.

Northern Gallery for Contemporary Art

National Glass Centre, Liberty Way, Sunderland
Sun-Sat 10 am to 5 pm

Heta Patel - Come as you really are -until 6th July. Patel is a London based artist and filmmaker. His work explores identity and freedom.

The People's Theatre, Foyer Gallery

Stephenson Road, Newcastle upon Tyne, NE6 5QF Until 25th July 2025.

Peter Hayes - The landscape we live in.
Peter's landscapes, convey some of his intense and immersive experiences in Britain's countryside, and 'peoplescapes'. They are narrative paintings which explore the ways humans interact with nature.

South Shields Museum and Art Gallery

Ocean Road, South Shields. Mon-Fri 10 till 5 pm. Sat 11 till 4 pm.

Richard Hobson - Spirit of the North East
Until 2 November, 2025

In this exhibition Hobson captures the changing landscapes, industry and communities of the North East.

Permanent: Tales of South Tyneside. See how South Tyneside has changed over 150 years.

St.Art Shop and Gallery

3 West Tower Street, Carlisle CA3 8QT
startopenstudios.org The new shop aims to provide a platform for emerging and established artists and to reach a broader audience. It aims to host regular workshops. It has 6 working art studio places

Sunderland Museum & Winter Gardens

Burdon Road, Sunderland, SR1 1PP
Saturday 10 to 4 pm. Mon-Fri 9.30 to 5pm

Tower House Gallery

Collywell Bay Road, Seaton Sluice NE26 4QZ
11-4pm Wednesday to Sunday. The gallery represents over 40 artists from the North East. Paintings, prints, jewellery, glass, sculpture, ceramics, poetry on a range of environmental themes are available.

Tullie House Museum and Art Gallery

Castle Street, Carlisle, CA3 8TP. Mon to Sat 10am to 4 pm Sunday 11 am to 4 pm.

Winifred Nicholson - Cumbrian Rag Rugs

until 15th June
Winifred Nicholson 1893-1981 is best known for her paintings, this is the first exhibition dedicated to her relationship with the tradition of rag rug making.

Wild and Free Gallery

3A Ilfracombe Gardens, Whitley Bay, NE26 3ND

Joanne Wishart Gallery

6 St. George's Road, Cullercoats, NE30 3JY
Open Weds to Sat 10-5 pm. Joanne specialises in colourful local coastal and seaside pictures