



In this issue:

Introducing our new committee
Online workshop booking trial
Featured artist - Steve Pardue

Journaling, Batik, Monoprint and Festive Stitching Workshops

Spotlight on: Hexham Old Gaol

"What's On" at The Hatton and locally

Friends of the Hatton

Autumn Bulletin 2025

President: Baroness Joyce Quin

www.friendsofthehatton.org.uk

The Friends of the Hatton is a registered charity No. 1089739

Hatton Friends

This page is intentionally blank. Why not draw a picture here :)

Dear Friends

Welcome to our Autumn Bulletin.

The appointment of new committee members at the reconvened AGM means that the Friends of the Hatton is able to continue. When the possibility of closure threatened the group, I decided to volunteer as Chair. As a past manager of a charity, I know how important members, trustees and the committee are to the organisation.

As the new Chair I am really looking forward to working with the members of the Committee. They are all extremely talented and able to steer the group through the next few years.

I would like to take this opportunity to thank Bill, Richard and John for their tireless work as Chair, Secretary and Treasurer. These are key roles in any organisation but essential in a charity, such as the Friends.

The Hatton has a very special place in my life. I graduated from the Fine Art department here in 1977. The students have always benefitted from having such a prestigious gallery on site, not only from its own collection but also its varied visiting exhibitions. I remember studying the Burrell Collection here before it was installed in its new building in Glasgow!

This demonstrates what a valuable asset the Hatton is to both the University and the people of Newcastle and surroundings. I'm sure you are aware of its historical links with the Pitmen Painters!

It is with great pleasure that I emphasise 'Friends' in this introduction. Recently a member of the committee mentioned that she had joined to 'make friends'. As Friends we always welcome new members as we actively support the gallery and the arts in our region.

I was a member of the Friends many years ago. I recently attended a number of Josephine's imaginative events. These were so engaging and the attendees such fun, that I was inspired to rejoin!

So, if you thinking of joining - come along to an event which are also open to non-members.

We have a Nature Journaling workshop: this is with Steve Pardue the featured artist in this issue. There is also a Batik workshop, a monotype / print workshop and a festive art workshop, for December. They are all led by professional artists and both welcome those with experience and those who are keen beginners.

And don't forget to visit the Hatton's forth coming exhibition: 'Some kind of love, actions and reactions to living on a damaged planet' by Uta Kogelsberger - and definitely join the Friends !

Geraldine Morris-Dowling
Chair of Friends of the Hatton

Special thanks again to Bill, Richard and John

Last year, our Chair (Bill Jackson), Secretary (Richard Thompson) and Treasurer (John Dance) all retired their posts. Bill has been Chair for three years and Richard and John have been in post since 2012, a whopping thirteen years!

We'd like to take this opportunity to thank Bill, Richard and John for their untiring efforts managing, steering and organising the Friends' activities over recent years.

Introducing the new Foth committee

At our recently reconvened AGM we were able to elect people to the posts necessary for us to continue as an organisation. We are very pleased that we are able to continue with our activities and we hope you are too.

We thought it would be a good opportunity to introduce you briefly to our committee members:

Geraldine Morris-Dowling - Chair

I studied Fine Art at Newcastle University from '72-'73, and at Goldsmiths College, '79-'80. I taught in Further Education before working for the National Trust. I later trained, qualified and worked as a Landscape Architect. I returned to Further Education, where I taught art in Community Learning. I finally became an Education Officer for the northern region of the Association of Colleges. I retired to become a full time unpaid Carer for 11 years for my chronically ill husband .

Throughout this very varied career I have always maintained my interest and practice in art and design. This includes painting, exhibiting and gallery and museum visits across the world. I am especially interested in Japanese culture, textiles and garden design.

Maggie Bassendine - Secretary

A member of Foth for decades, I have now stepped up to be secretary. I am a retired member of staff of Newcastle University, having worked as clinician scientist. I am a weaver/maker, and my late partner was a visual artist (Roy Jackson, 1944-2013).

Pete Mackay-Jackson - Treasurer

I moved to Newcastle from Gibraltar in 2004 to study Fine Art at Newcastle University and during my student years I volunteered as a gallery invigilator at the Hatton Gallery. I joined the Foth in 2024 to learn more about their events, and support the gallery, which means a lot to me. In my artistic practice I make ceramics, and in my vocational roles I have worked with various art organisations across the North East over the past twenty years. The outgoing Treasurer John Dance held the post for 18 years, and I only hope I can match his reliability and high standards.

Jo Cousin - Vice Chair and Events organiser

I am from the North East. My background is in teaching and Community Co-ordination. I joined Foth in 2018 when the previous Events Coordinator stepped down. I became Vice Chair in August 2025.

Suzi Firenzi - Publicity Officer

I am a portrait, landscape artist and photographer with a background in graphic design and teaching. I have been a member of Foth for around 10 years and have held the role of Publicity Officer for two years. I ensure our exhibition information reaches a wide audience.

Roger Newbrook - Social Media Coordinator

Originally from Manchester, I have lived in the North East since 1991. My background is Graphic Design and Art History and I unexpectedly became a DJ in 2016 (for my Club 30-80). I joined the Friends in 2008 largely to participate in their annual exhibitions. I took on the role of Social Media Coordinator in 2018. This involves looking after the Friends' website and Facebook page and putting together our quarterly bulletins.

Alan Bond - Committee member

my working career, started in the Tyneside shipyards in 1966 until 71 as an electrician . I joined the RFA (Royal Fleet Auxiliary) in 1972 as an electrical officer and stayed until my retirement in 2008. I have engaged myself in the voluntary sector with many organisations, including Beamish Museum and local walking group with Groundworks. I am currently involved with Age UK, South Tyneside. In my spare time I enjoy drawing and painting

Sheila Culling - Committee member

I have lived in the North East all my life .After working in the NHS for 43yrs I retired eleven years ago. Initially I was volunteering for five years for a local children's charity as well as supporting family members with care needs .

I now have more time to pursue my interest in the arts (although this has always been a constant in the background). I joined the Friends of the Hatton three years ago after attending one of Jo's workshops. I appreciate the skills and expertise artists share at these events and the opportunity to experiment with different processes. Before joining the Friends I would regularly call in to see the exhibitions of graduates showcasing emerging talent as well as recognised artists .

Andy Costello - Committee member

I'm a teacher at a huge secondary school in Newcastle. I actually have no creative skills, unlike most of the committee! I graduated from Newcastle University in 1995; I absolutely loved it. I also did my PGCE at Newcastle. I've always thought the Hatton is a wonderful gallery with its own unique appeal. When I joined the Friends of the Hatton years ago it was mainly a way to maintain some kind of link to Newcastle University but over time it's really become just about the Hatton itself.

I'm really happy to be in a position to help out and hope I can make myself useful!

Do you buy your event tickets online?

After asking the question, it seems like quite a few of us do! So, we have decided to give it a go too, with our events schedule. We are trialling online ticket agent We Got Tickets to sell some tickets for this quarter's workshops.



We have set up a Friends of the Hatton page at wegottickets.com/FriendsoftheHatton. You can buy tickets for members or non-members for all of our published events. Give it a go and let us know how you get on.

Just to reassure you, **we're not moving our event booking entirely online**, we think this gives us extra flexibility regarding payment and want to see if this makes managing bookings for our workshops and other events easier for us. If you prefer to reserve your place(s) via email, you can still contact josephinecousin@googlemail.com.

We would also welcome feedback on this change too. Email us at FotHChair@gmail.com and let us know what you think.

Featured Artist - Steve Pardue

Steve is an artist and designer, living and working in Northumberland. He combines a love of walking and nature with his art and fills his notebooks with poetic and immersive responses to nature and the world around him. He is also leading a workshop in Creative Nature Journaling for us on 13 Sept.

In recent years Steve has been focussing on designing and producing art for outdoor spaces.



In August his sculpture **Lace and Grace** was unveiled. The brief was to explore stories about Olney (a small Market Town, near Milton Keynes). From early discussions with the client the name Lace and Grace emerged and from the subsequent site visit a form grew.

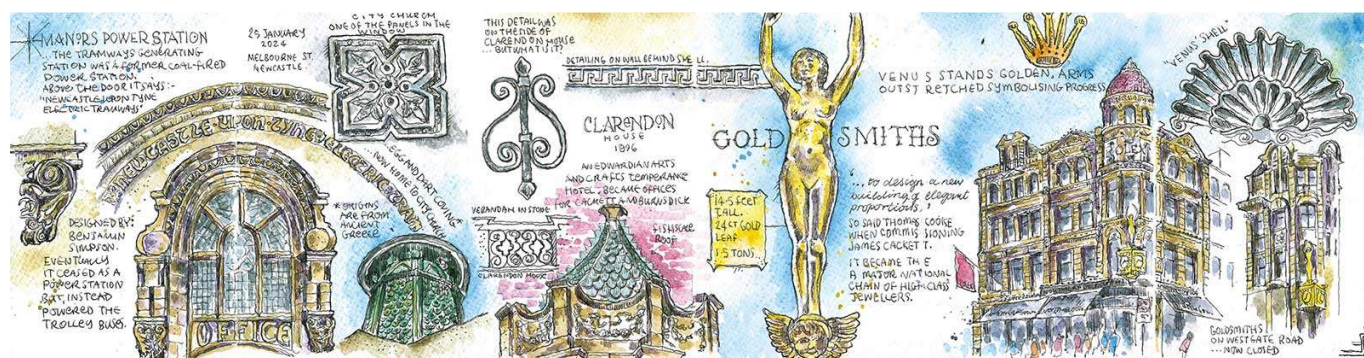
The focus for the artwork brings together the colliding themes of Lace and Grace. Lace offers a way of combining strands of thought

into a unifying image. The threads are carefully connected together with seeming ease and without obvious joins. The delicate tracery of lace is like streams of consciousness that is woven from thin air.

"The patterns created offer strength in unity and grace in thought. The words from Amazing Grace bring together John Newton's bitter life experience and subsequent conversion to the anti slavery cause into a hymn that has been adopted by diverse communities across the globe.

These two themes show that we can all weave our own threads in life."

Read more about **Lace and Grace** here: differentia.co.uk/news/2025/7/29/lace-and-grace-installed



Perhaps the most significant piece Steve will be installing this year is **Figures of Tyne**. This is destined to adorn the wall of the new HMRC regional headquarters in Newcastle City Centre. The piece is very much a celebration of the history, architecture and people of Newcastle. It is a look at the architectural gems of Newcastle.

“There is a lot of hidden iconography above doorways, high up on tall buildings and above windows. There are also some quirky features inside and outside buildings - the Black Rabbit/hare at Cathedral Buildings for instance.

“The imagery feeds into the ornate steel work of the artwork and is also informed by a public engagement project where I worked with artists and staff at HMRC guiding them through a process of creating Chapbooks allowing them to take their own personal and creative view of Newcastle. The subsequent work is on display in the Grainger Market.”

More about **Figures of Tyne**: differentia.co.uk/news/2024/10/11/figures-of-tyne-october-update

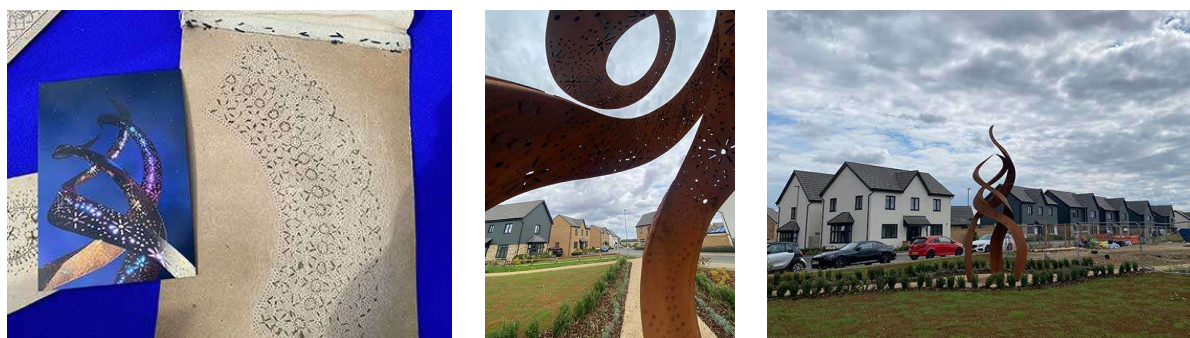


Steve has been working on his **nature based art** recently and this is now his focus going forward. This has long been a hobby and main interest and he has been creating nature journals for many years. Steve now teaches people how to see nature and record what they see using their own creative voice. “I don’t teach people how to draw as such, its more about seeing what people do and helping them to develop their own style and technique”.

“My own work is personal (creating nature journals from observations) but also adding my own feelings and thoughts; sometimes poetry, lyrics and quotations, into my journals. My aim is really just to notice nature and the beauty of the natural world, which speaks for itself.

“My journals are continuous and record a journey (usually with my dog, Jess). When I look at them, they offer not only a useful scientific record but also a visual and immersive prompt. When teaching journaling I provide a background, as well as all of the materials needed to create a beautiful little journal and help to tease out the unique voice and style of drawing that is innate in everyone.”

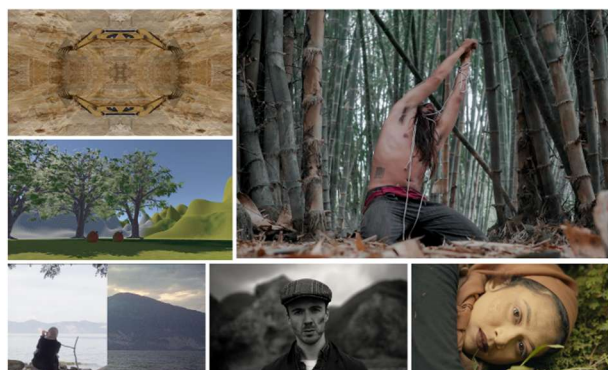
You can find out more about Steve’s journals here: stevepardue.art/my-nature-journals



Some of Steve’s Art in the Outside

www.stevepardue.art | nature journals | public art | paintings | illustration | differentia.co.uk for public art.

Extraction Echoes - a Videocity exhibition



Extraction Echoes is an international exhibition by Videocity and Forum Sudut Pandang. It is supported by the British Council and co-curated by Friend Polina Chizhova. It takes place in 3 different locations around the world, Newcastle upon Tyne, Jakarta and Palu in Indonesia.

The collaborative exhibition project brings together Indonesian and British video works and explores the histories and contemporaneities of extraction and its impact on nature.

Extraction Echoes invites us to reflect on the complex relations surrounding extraction in the UK and Indonesian socio-cultural-geographical contexts, presenting video works that emphasise the interconnection between humans and our environments. From the depletion of natural resources and the heritage of coal mining to folk tales, the range of artistic positions invites us to reflect on our past, current and potential relationships with nature, whether harmonious, destructive or somewhere inbetween. Project webpage: videocity.org/extraction-echoes

Exhibition dates and venues:

Tyneside Bar & Café, Tyneside Cinema, Newcastle : until 7.September

Kongsi 8, Jakarta, Indonesia: until 28 September

Marlah! Hub, Palu, Indonesia: until 18 September

The Collective Studio 2025-26 - applications

The NewBridge Project are pleased to announce we're now accepting applications for The Collective Studio: 2025-26! Please visit their website for more information: <https://thenewbridgeproject.com/>

You'll have to be quick, the **deadline for applications: 9 September 2025, 5pm.**

The Collective Studio is a 10-month development programme for early-career artists and/or recent graduates. It is open to creative practitioners in any discipline and runs from Nov 2025 to Sept 2026.

They offer affordable studios, support, a programme of events, mentoring and exhibitions. It is a space to test ideas within a nurturing, critically engaged community. If you've just left university, or have not been to university but are searching for like-minded people. Maybe you are returning to a creative endeavour after "life got in the way" for a while. All these routes and more might lead you to The Collective Studio!

They're hosting two open days (in-person or online) to learn more about The Collective Studio and meet NewBridge Project staff. They are on **Tues 12 Aug, 11am - 12pm** and **Tues 19 Aug, 4pm - 5pm.**

Please contact Dan Russell at dan@thenewbridgeproject.com if you have further questions.

Spotlight on: Hexham Old Gaol

Set in the historic Tyne Valley, Hexham Gaol (one of North East Museums) is the earliest purpose-built prison in England. Built in 1333 with stone from the Corbridge Roman site, it's now a Scheduled Ancient Monument and offers a fun and educational day out. Visitors can step into the prison house, try the stocks, and discover what life was like for medieval prisoners, from debtors to dangerous criminals.

Hexham Old Gaol is on Hallgate, Hexham NE46 1XD. It is open every day 10am-4pm. And although there is an admission price, you pay once and enjoy unlimited repeat visits for 12 months.

Adults: £8 (£7 without optional donation)

Concession (Over 60s and Student Card Holders): £7 (£6 without optional donation)

Under 18s: Free



In September, the Old Gaol is taking part in the annual Heritage Open Days:

The House of Correction Tours - Heritage Open Days are held on Saturday 13 and Sunday 14 September at 11am, 12 noon, 2pm and 3pm

This is a free tour, donations are welcome. The tours are very popular so **booking is essential**

The tour will start from Hexham Old Gaol and will last approximately 45 minutes, including a 15-minute walk between Hexham Old Gaol and the House of Correction.

Join the team to discover this building's interesting (and rather grim) history. Have a look around, find out more about the poor inmates' daily chores and their bleak diet.

For more information and to book: northeastmuseums.org.uk/hexhamoldgaol/

The Gaol website: museumsnorthumberland.org.uk/hexham-old-gaol/

The Gaol on Facebook: facebook.com/HexhamOldGaol/

The Gaol on Instagram: instagram.com/hexhamoldgaol/

Promoting your exhibitions and art events

If you are a member of FotH and are exhibiting your work, we are happy to promote it to our members on our website and Facebook page. Send us some details, including a brief outline of your exhibition plus dates, times and the venue.

Send details of your event/exhibition to FotHChair@gmail.com

Workshops

Workshops are £20 for members, £25 for non-members. **Workshops are held in the Learning Room at the gallery** unless stated otherwise. If you are interested in attending these workshops, you can book online at wegottickets.com/FriendsoftheHatton or contact josephinecousin@googlemail.com.

An Introduction to Creative Nature Journaling with Steve Pardue

Saturday 13 September, 11-3pm - book online at wegottickets.com/event/673672

Join artist and naturalist Steve Pardue for a hands-on, immersive course designed to introduce you to the art of nature journaling at the Hatton Gallery.

Whether you've always wanted to start a nature journal but didn't know where to begin, or if you've tried and struggled to maintain the habit, this course is for you!

During the session you'll learn how to notice nature in new and meaningful ways and translate your observations into creative expression on the page.

This session is all about observation and creative expression. No need for advanced artistic skills, just a love of nature and a willingness to have a go! You'll learn how to develop a daily journaling habit and how to capture the world around you in your own unique way.



Session Overview:

- Learn techniques for observation and creative expression
- Practice drawing from nature and incorporating storytelling into your journal
- Consolidate your learning and finish your nature journal with watercolour.
- Tips for maintaining your journaling practice beyond the course
- You will be given a blank concertina nature journal to take away with so you can continue your nature journal at your own pace.
- You will also be given a fineliner pen which you can take home at the end of the session along with Steve's "Shortcut to Nature Journaling" guide.
- There will be access to shared watercolour sets to add colour to the journals

Steve will guide you through his process and will introduce you to his unique way of looking at nature and gain a better understanding as to the importance of observing and recording the nature on your doorstep. The session is suitable for everyone no matter your drawing skills.

If you can, **bring along some photographs** (on your phone or tablet) of your garden or local nature patch for reference. You can also bring your own sketching materials if you wish.

An introduction to monotype with Hannah Forsyth

Saturday 4 October, 11-3pm - book online at <https://wegottickets.com/event/673723>

There are many different ways of creating a monotype, in this workshop we will look at 2 of them, working with one colour (fabulous Prussian Blue) & a hand bamboo burnisher. There's no need for a printing press.

You will leave with the understanding of materials & transferable skills you need to monotype easily in your 'kitchen studio' at home.

1: Monochrome Linear Monotypes - Placing Paper on an Inked up Slab and Drawing on the back

2: Painterly Monotypes – Painting the Image on the Slab

Mono printing/ monotype is very a playful process that's loose & fun! **No previous experience is necessary other than a disposition set to 'play'.**

Format of the work shop:-

Arrive and introductions - to each other and to monotype!

'Monochrome Linear Monotypes' - Placing Paper on an Inked up Slab and Drawing on the Reverse, building up confidence & understanding through line, play & experimenting.

Quick break for lunch - have a look at your creations & others!

"Painterly Monotypes" - Painting the Image on the Slab, using mark making from the morning, build up a library of printing imagery, techniques & visual vocabulary to put into play with a Painterly Monotype Seascape.

Tidy up, and then a collective look - head home happy with many prints and a head full of ideas!



Equipment and reference materials

Hannah will bring paper, ink etc. The paper we will be working on is mostly newsprint as the emphasis is on play, not aiming for finished masterpieces, just an introduction to what is possible.

Equipment

Hannah will bring all equipment needed, but if participants could **bring old clothes /apron to wear and any Mark making tools** - anything and everything they can think of! Old t-shirts, sponges, bbq sticks, cotton buds, newspaper, credit cards; anything that can make a mark or leave a texture.

Hannah will also bring some mark making bits and bobs. If you'd like, bring a variety of images to work from in the afternoon, landscapes/sea scapes/animals/flowers.

The main focus of the workshop is in playing, exploring marks, tone and texture.

Introduction to the traditional art of Batik with Louise Underwood

Saturday 8 November 11-2pm - book online at wegottickets.com/event/673750

During the workshop, you will be introduced to the ancient art of Batik, using wax resist and fabric dyes. You will first learn the basic techniques and how to apply the wax with Jantings, experiment with mark-making and fabric dye application. You will then make a larger individual piece to your own design, or by using templates available. This workshop is suitable for beginners and no previous knowledge of this technique is needed.

As we will be working with fabric dyes, please bring an apron or wear

clothes which you do not mind getting paint on.



Louise is a textile artist based in Newcastle. She makes unique pieces, using traditional techniques including batik, patchwork and quilting, hooky and proggy matting, spinning, embroidery, felting making, upholstery, printing and community yarnbombing. Louise's studio is open to the public during Ouseburn Open Studios on 29 and 30 November, at 36 Lime Street, Studio 2D.

Festive Folk Art: hand-stitched decorations made with vintage fabrics with Kath Price

6 December 2025. 11am-3pm - book online at wegottickets.com/event/673753



Join textile artist Kath Price for a relaxing session of stitching using her collection of wonderful antique and vintage fabric pieces which will include nineteenth century patchwork and Durham quilts and Laura Ashley designs from the 1970's and 80's.

You will be able to select a pre-cut design from one of the following: festive tree, angel wings, Dala horse, wild star, to personalise with stitch, buttons, charms, beads and vintage lace. Then, take a template to create a second item from the fabric on offer, and also, using the simple 'Suffolk Puff' technique, you may produce further decorations to create a bauble or attach them to a little drawstring bag, as in the photograph.

No experience is necessary. Everything is provided and we shall enjoy having a relaxing time in a friendly and supportive atmosphere.

Review of our recent Drawing Form workshop led by Theresa Poulton

Today, I joined 6 other ladies in this workshop. We did exercises in portraying graduation of tonality using cross-hatching etc, to shape form. We also worked from a photo of the Three Graces, to show how tonality gives shape to the form, and how the position of the legs changes the body shape.

We also did a still life from an apple using tonality to portray shape and a sense of space. We all benefited from this workshop, and I personally realised how much I had forgotten about observation. So glad I went to this workshop.

Judith Ramsay



What's on at the Hatton Gallery

Hatton Gallery Opening Times: Monday to Saturday, 10am to 5pm

Uta Kögelsberger - Some Kind of Love: Actions and Reactions to Living on a Damaged Planet **20 Sept 2025 - 24 Jan 2026**

This is a solo exhibition by award winning artist Uta Kögelsberger.



Through a series of interconnected works spanning video, sound and installation, the exhibition continues Kögelsberger's sustained investigation of the complex relationships between human and ecological systems in

a time of environmental change. It brings together, for the first time, four major bodies of new and existing works that navigate the tensions between destruction and nurture,

fragility and resilience, loss and regeneration.

Kurt Schwitters' Merz Barn Wall



The Merz Barn Wall takes pride of place at the centre of the Hatton. The Merz Barn Wall is part of a construction created by German artist Kurt Schwitters in a Lake District barn in 1947-8. The Elterwater Merz Barn was based on the idea of collage, in which found items are incorporated into an art work. Schwitters applied a rough layer of decorator's plaster and paint over these found objects, giving the three dimensional collage an abstract quality. Asked what it meant, he replied '*all it is, is form and colour, just form and colour*'. Schwitters' Merz Barn Wall is now presented alongside new interpretation.

On permanent display - Free

What's on locally

Some other highlights from galleries across the region...

Baltic Centre for Contemporary Art

Shore Road, Gateshead Quays

Ali Cherri - How I Am Monument until 12 Oct, Ali Cherri presents a major body of new work inspired by archaeological artefacts and the natural world.

Laura and Rachel Lancaster - Remember, Somewhere until 12 Oct, the Lancaster sisters (identical twins) have carved out distinct painting styles and have exhibited nationally and internationally.

Saelia Aparicio. A Joyful Parasite. until 1 Feb, 2026. A major new commission and solo exhibition by London based Spanish Artist. Aparicio uses installation, sculpture and murals to weave together narrative, science fiction and ecological speculation to explore complex entanglements between bodies, environments and systems of care.

The Biscuit Factory

16 Stoddard Street NE1 1AN

10 till 5 pm each day. FREE

Alan Ball, Master Potter until 7 Sept. Ball celebrates his 90th Birthday with a showcase exhibition of large scale ceramics, memorabilia and archive pieces from his career of 60 years.

The Bowes Museum

Barnard Castle, County Durham Sun-Sat 10-5

17.50 under 18's free.

JOSÉPHINE: A Woman of Taste and Fashion - Until 1 Feb 2026. Timeless elegance, craftsmanship and innovation of Bowes' textile collection to discover in this captivating display.

Pippa Hale - Pet Project, until 1 March 2026. The museum's renowned ceramic collection re-imagined into a vibrant and interactive experience for all ages.

Not just nude, until 2 Nov. Explore fresh perspectives on the nude form in this special co-produced display in the Blue Picture Gallery. Look beyond tradition,

Bureau of Dreams

St. Mary's Chare, Hexham, NE 46 1NQ

Open Thurs to Sat 10-4pm.

Rachel Hope paintings and collages, influenced by Surrealism and inspired by a sense of magic.

Castle Fine Arts

61-67 Grey Street, Newcastle upon Tyne

Open Mon to Sat 10-6pm Sun 11-5pm.

Featured artists in the Gallery include:

Bob Dylan, Johnny Depp and Boy George.

Dead Dog Gallery

Durham Sixth Form Centre, Providence Row, The Sands, Durham, DH1 1SG

Mark Pinder - From the Pit Up, until 12 Sept, presents a focused narrative strand within Pinder's broader 'state of the nation' project, an ongoing body of work initiated in the mid-1980s.

Jim Edwards Studio

57 Lime Street, Newcastle upon Tyne, NE1 2PQ

Tues-Fri 10 till 4 pm. Saturday by appointment.

The Find. Vintage and Artisan Goods

59 Lime Street. Ouseburn Valley

Open Wednesday - Sunday 10 to 5 pm

Gallagher and Turner

30 St. Mary's Place, NE1 7PQ.

Ørnulf Opdahl

Opdahl's intense, lyrically charged work projects the sort of presence of the elements - earth and fire, wind and water - which is only to be encountered in the Far North.

Great North Museum Hancock

Barras Bridge, Newcastle upon Tyne.

Mon-Fri 10 to 5, Sat 10 till 4, Sun 11 till 4

The Hancock Gallery

2 Jesmond Road West, Newcastle upon Tyne, NE2 4PQ. Open Tues - Sat 10-5pm

Hanji 16

St. Mary's Chare, Hexham, NE461NQ.

Origami Maps, Bookbinding kits, Original art. Yvetteja.com, hello@yvetteja.com

The Hut on the Green

Gosforth Central Park. Church Road, Rothwell Road, Gosforth, Newcastle upon Tyne, NE3 1TX

A place where people from all walks of life come together to explore, learn and create. Classes and courses: Life Drawing, painting, ceramics, basket weaving, children's art club. Email: nick@mushroomworks.com for info

Inspired Pots

6 Eastgate Hexham, Northumberland NE46 1BH

Potter Painting Sessions in Hexham.

Inspired Pots welcomes all ages and skill levels to create a one of a kind piece made by you. Studio assistants are on hand to demonstrate how everything works and help you choose, design and paint something unique to you.

Laing Art Gallery

New Bridge Street, Newcastle upon Tyne.

With these Hands until 27 September

True exhibition explores the representation of craft in paintings, drawings, and prints in Britain and Europe from the 1750s onwards.

Nerys Johnson: Disability & Practice until 6 Dec. New exhibition celebrates the life and work of local artist/curator Nerys Johnson (1942-2001).

Lollamac

St. Mary's Chare, Hexham, Northumberland.

Metalworking tools and techniques transform unassuming pieces of metal into wearable art.

Links Art Gallery

Dukes Walk, Whitley Bay, NE26 1TP

Open each day 9-5pm. A wide range of art and craft mostly by North East Artists.

Newcastle's Independent Handmade Market

Grainger Market 9 to 5 pm

First Saturday of the month.

Northern Gallery for Contemporary Art

National Glass Centre, Liberty Way, Sunderland Sun-Sat 10 am to 5 pm

Three Artists: Zac Weinberg, Joanna Manousis, and Anthony Amoako-Attah -until 10 Jan 2026. Three artists based at National Glass Centre where they create their internationally acknowledged work.

The People's Theatre, Foyer Gallery

Stephenson Road, Newcastle upon Tyne, NE6 5QF Until 25th July 2025.

North of England Art Club: Recent Work 30th Sept - 5th Dec. Members the region present work in a range of 2-D materials and styles.

Queens Hall Arts Centre

Beaumont Street, Hexham, NE46 3LS

Steve Pardue Art. An artist and designer living and working in Northumberland combines a love of walking and nature with art. "I fill my notebooks with poetic, immersive responses to nature and the world around me"

Shipley Art Gallery

Prince Consort Road, Gateshead, NE8 4JB

Christmas Craft Market

Sat 29 Nov & Sat 6 Dec. See northeastmuseums.org.uk/shipley for details.

South Shields Museum & Art Gallery

Ocean Road, South Shields. Mon-Fri 10 till 5 pm. Sat 11 till 4 pm.

Richard Hobson - Spirit of the North East

Until 2 Nov 2025. Hobson captures the changing landscapes, industry & communities of the region

Permanent: Tales of South Tyneside. See how South Tyneside has changed over 150 years.

The Art of Conservation, until 6 Dec. A glimpse into the process of art conservation. Visitors see how experts at North East Museums, preserve/restore artworks to ensure longevity and integrity.

St.Art Shop and Gallery

3 West Tower Street, Carlisle CA3 8QT

startopenstudios.org the new shop provides a platform for emerging and established artists. It has 6 working art studio places

**Sunderland Museum
& Winter Gardens**

Burdon Road, Sunderland, SR1 1PP

Saturday 10 to 4 pm. Mon-Fri 9.30 to 5pm

Going Back Brockens: Monuments and Rhetoric After the Miners' Strike, 12 Sept - 3 Jan 2026. Artist Narbi Price and writer Mark

Hudson share stories of hope and aspiration in mining communities 40 years after the Strike.

Tower House Gallery

Collywell Bay Road, Seaton Sluice NE26 4QZ

11-4pm Wednesday to Sunday. Over 40 artists from the North East. Paintings, prints, glass, jewellery, sculpture, ceramics, and poetry.

**Tullie House Museum
and Art Gallery**

Castle Street, Carlisle, CA3 8TP. Mon to Sat 10am to 4 pm Sunday 11 am to 4 pm.

Colour: A season of shades, tints and tones
27 Sept - 25 Jan 2026. What is colour? Why does it mean different things in different cultures and times?

Wild and Free Gallery

3A Ilfracombe Gardens, Whitley Bay, NE26 3ND

Joanne Wishart Gallery

6 St. George's Road, Cullercoats, NE30 3JY

Open Weds to Sat 10-5 pm. Colourful local coastal and seaside picture

This bulletin contains contributions by:

Maggie Bassendine, Alan Bond, Polina Chizhova, Andy Costello, Josephine Cousin, Sheila Culling, Peter Mackay-Jackson, Geraldine Morris-Dowling, Roger Newbrook, Steve Pardue & Judith Ramsay.

If you would like to write an article for us for use in a future bulletin; maybe a review of a workshop, talk or an exhibition you have seen, please contact us, by emailing FothChair@gmail.com or drop us a line of our Facebook page: facebook.com/friendsofthehatton.